



**ROCKY
MOUNTAIN
PHOENIX**

EMERGENCY VEHICLES, EQUIPMENT & SERVICE

product catalogue





S511

The S 511 is our most powerful cutter to date. Delivering up to an incredible 236,000 lbs. of cutting force, this tool will dominate even the most demanding rescue scenes. Weighing in at only 41.4 lbs., it can cut up to 1.6" steel bar with power to spare.



R422

Two-stage ram jack. Solid steel telescoping piston rod provides high tensile strength and eliminates side load distortion. Spreading force: piston 1: 60,000 lbs (267 kN); piston 2: 29,900 lbs (133 kN). Stroke: 27.8" (705 mm). Length: closed: 23" (550 mm); open: 50.8" (1,255 mm). Weight: 41.1 lbs (18.8 kg).



SP310

The SP 310 Spreader brings unsurpassed versatility to rescue operations. It is equipped with patented multifunctional tips for spreading, peeling, pulling and squeezing. Superior Ergonomics and durability assure efficient rescue operations. Robust and reliable design combined with low weight is the highlight of this tool.



P620SG

The lightest SIMO power unit with a 20% higher flow rate than comparable models. The new P 620 SG offers special advantages for mobile operation. Portability for rescue works involving two tools through low weight and small dimensions. Nearly unlimited operation time through efficient cooling of the engine.



JL-MOC II

Vehicle manufacturers are using more high-strength steels in their operations than ever before. These new materials pose additional challenges for rescuers. The Hurst® JL- MOC II curved blade cutter was designed to address these ever-changing conditions. With up to 152,870 lbs. of cutting force, this incredible cutter weighs in at only 47 lbs.



ML-28

Meet the Defender! Built for easy handling, the Defender boasts improved ergonomic features as well as a stargrip actuator with a stationary handle for easy fingertip actuation in even the most compromising rescue situations. The enhanced power of the Defender provides a spreading force of up to 44,000 lbs. and a pulling force of up to 6,969 lbs. yet it weighs in at a light 49 lbs.



JL-30C

The JL-30C Ram is ideal for reaching confined spaces and creating large openings critical for extrication. The JL-30C Ram has an opening force up to 15,708 lbs. It will extend to a length of 36".



SIMO/QUAD POWER UNITS

When it comes to saving lives there's no time to dilly-dally. That's why our new SIMO/QUAD Power Units are perfect for fire fighters and rescue workers needing to work quickly



s p e c i a l i t y

LKE 55

The battery tool with more performance and less weight than any comparable tool. Combination tool for cutting and spreading with a self contained, interchangeable Bosch® high performance battery system (charging time: 15 min.) for higher mobility in rescues and in areas difficult to reach.



HP COMBO PLUS

When resources are limited, the HP Combo Plus is the tool of choice for First Responders. This two-stage pump requires no gas, hose or battery yet still boasts a spreading force up to 26,940 lbs. Its small size and light weight make it one of the most versatile tools available.



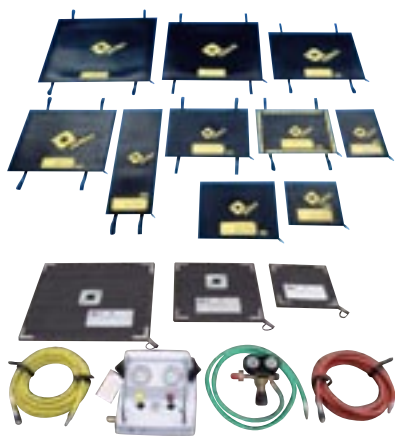
RABBIT FORCIBLE ENTRY TOOL

Spreading distance of 4" for challenging forcible entry applications. Spreading force of 8,000 lbs. for maximum power. Weighs only 11 lbs. for convenient portability.



PORTABLE MINI CUTTER

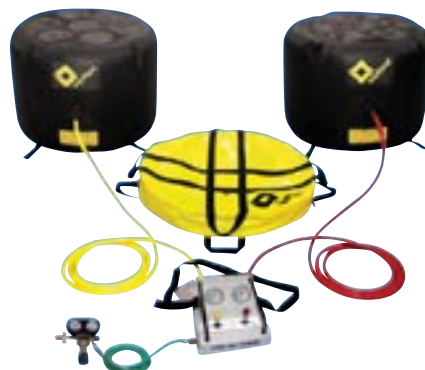
Cutter opening of 1.5" for operation in confined spaces. Cutting force up to 17,000 lbs. for plenty of power in extreme conditions. Weighs only 8 lbs. for convenient portability.



s a b i z a t i o n

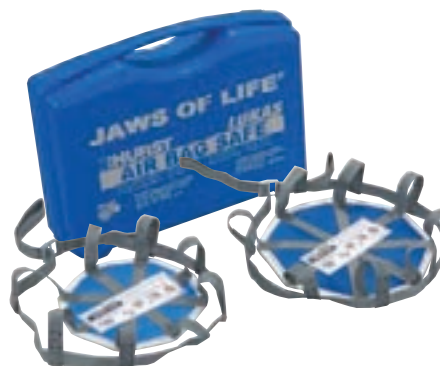
HP AIR BAG KITS

- 25% increase in power with same bag size and weight
- Common insertion height of 2.5cm for all bags
- New interlocking surface profile
- Reflective central and corner marking
- Contemporary type label
- Up to 3 uniquely raised position aids on each side of the bag



LP AIR BAG KITS

- Low pressure point loading of maximum 1000g/cm2
- Constant lifting power over the complete lift
- High Degree of flexibility, they grip a load around the edges, then lift and press simultaneously
- Can be easily repaired when damaged
- Operating pressure of 0.1 bar to 1.0 bar, regulated by a controller (1.45 psi to 14.5 psi)



AIR BAG SAFES

Up to 20 minutes after a traffic accident, no deployed air bags can unexpectedly be inflated even with the battery disconnected. The HURST Air Bag Safe protects both rescuer and passenger from injury that might be caused by uncontrolled inflation of the air bag during rescue work.



AIRSHORE QUICKSTRUT KIT

The QUICKSTRUT safely supports vehicles involved in an accident, whatever their position. The struts are positioned diagonally at an angle of between 25 and 35°. The car body is fastened to the ratchet strap with a hook. When the strap is tightened, the claws of the swivelling top plate press into the car's bodywork. The base plate affixes itself to the ground and can be additionally secured using pins.



e d r a u l i c s

COMBI SC 350E

Introducing the dynamic duo, the all in one rescue tool. The SC 350E has all of the power and flexibility to help you rip, cut or bend steel as needed. Not only will it save the day in most rescue situations, it will do so without the need for a pump and hoses. Quite simply, it's the most portable and versatile combi tool on the market today!



EDRAULICS CUTTER - S700E

With the S 700 E, we have developed a cutter in which blade opening and force application are perfectly matched to the relevant working range.

EDRAULICS CUTTER - S311E

The "little brother" of the S 700 E is particularly convenient and easy to use. Its sophisticated blade geometry means that it is fully optimized for vehicle extrication.



u l l i c s

EDRAULICS RAM - R411E

The R 411E is powerful, extremely compact and offers impressive strength. With the ability to operate in battery mode or with a cord, this remarkable tool has power to spare. The claws at the two ends can be rotated by 360°, enabling you to apply the ram effectively in almost any rescue situation.



c s

EDRAULICS SPREADER - SP300E

With this new, completely redesigned spreader, you have the freedom to operate in battery mode-which means the ability to perform rescues in even the most challenging environments. The option to plug in and power the tools with a cord allows for continuous operation. The SP 300E offers the perfect combination of strength and spreading distance.



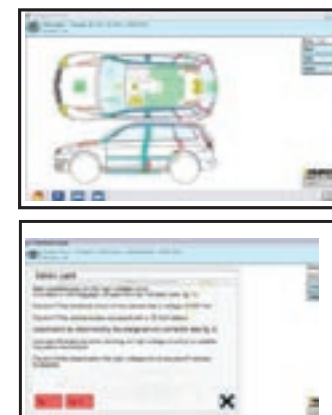
New STREAMLINE Technology Coupling

The new STREAMLINE Technology coupling combines the advantages of both single-coupling and two hose systems, simplifying the connection and disconnection of tools while saving valuable time in the "golden hour". Issues with miscommunication between rescuers and pump operators are minimized with STREAMLINE Technology.



Crash Recovery System

STREAMLINE Technology offers a comprehensive and advanced range of new rescue tools. In addition the Crash Recovery System® provides comprehensive information about any wrecked vehicle, since the inception of airbags, immediately enabling a quick and safe extrication.



Features:

- Quick and easy to use
- Increases safety
- Saves valuable time
- Mobile, comprehensive and up to date
- Database will be continuously expanded



h a n d l i n g TURBOJET NOZZLE

The Akron adjustable gallonage Turbojet nozzle is unmatched in today's fire service for its flexibility and flow control. The Turbojet is a constant gallonage nozzle (flow remains the same in all patterns) with multiple flow settings for operator flow control. Use the Turbojet one time and see why it is the best nozzle in the world.



SABREJET NOZZLE

The patented SaberJet nozzle is a truly multi-purpose nozzle with the penetration of a solid bore tip and the safety of a fog pattern. The Single Shutoff SaberJet has a unique three position handle and ball to give you solid bore, fog or closed positions. The Dual Shutoff SaberJet allows you to flow both solid bore and fog stream at the same time. This one of a kind nozzle is ideal for multiple applications.



ASSAULT NOZZLE

Akron® Assault Nozzles combine the quality stream performance at a variety of pressures with the simplicity of a fixed orifice. It is one of the most versatile and easy-to-use nozzles in today's fire service. Superior stream performance, a quick change pattern adjustment along with a durable and simple design makes the Assault an unbeatable value.



ZERO TORQUE NOZZLE

The Zero Torque (ZT) nozzle is the first nozzle specifically designed with ergonomics, handling, control and reduced firefighter fatigue in mind. The ZT naturally keeps the nozzle out in front of the firefighter to allow for easier operation and provide better control. In addition the pistol grip and inlet swivel are positioned to eliminate the reaction force torque found in all conventional pistol grip designs

MERCURY QUICK ATTACK MONITOR



s p e c i a l MERCURMASTER 1000 MONITOR T NOZZLE

The MercuryMaster 1000 is the newest innovation to the portable monitor line. This monitor is the smallest and lightest of all 1000 gpm monitors in the firefighting industry. This monitor will save valuable time at the fire scene with its quick deployment and conserve precious space on the fire truck with its compact size.



e c i a l MERCURY QUICK-ATTACK MONITOR

The Mercury Quick Attack Monitor is the newest innovation in firefighting equipment. This monitor is smaller than any other portable ground monitor so it can be quickly set up and left unmanned at the fire scene to free up valuable personnel.



i a l Cord Reel w/Light

Cord Reel Lights are reverse wired live cord reels, which allows a plug on the cord to be plugged into a power source while the Cord Reel Light is carried to the fire ground or work site. The Cord Reel Light allows the scene to be illuminated while providing a receptacle for additional tools or lights. Akron Brass' Cord Reel Light comes with a 500 Watt low profile Beta Light head. Cord and Plug Extra.



t v Adapt-a-Pole™

The Adapt-a-Pole is designed to deliver a multi-purpose tool for use in every situation. This tool allows for flexibility & versatility from the same handle. To change tools or hooks, simply disengage the Adapt-a-Pole locking mechanism, select and attach the desired tool or hook for the job. Then it's back to work.



f

FIRE FLASH® XTREME

For structural fire fighting, wildland fire fighting, USAR & hazmat. Features rubber toe cap and reflective strip, new lacing system, more flexibility and climate comfort. Leg height 10 inches.

- Chainsaw protection
- HAIX® zipper lacing system
- HAIX® climate system
- HAIX® msl system
- T-grip
- Profiled rubber Toe Cap
- NFPA Certified
- CAN/CSA Z195 Certified



i

FIRE HIKER

- Dual Purpose Boot for Wildland and Station Use
- HAIX® SECURA LINER™
- HAIX® SUN REFLECT Leather
- Non-Heat Transferring, Non-Metallic Toe Cap
- HAIX® CLIMATE SYSTEM
- Uniquely Designed Rubber Nitrile Sole with a Stable Non-slip Edge for Uneven Terrain



r

FIRE HUNTER® XTREME

HAIX® Climate System Moisture Barrier: CROSSTECH® footwear waterproof, breathable, bacteria and chemical resistant, bloodborne pathogen resistant
HAIX® AF System: the Ankle Flex System refers to the functionality of a pull-on boot which enables it to adjust to different foot, ankle and heel shapes.



e

FIRE HERO XTREME®

- NEWLY developed model for Structural Fire-fighting
- profiled rubber toe cap
- shin protection
- larger boot straps
- HAIX® AF System (AF) flexible insert in the shaft/instep area stabilizes the foot at the ankle and thus prevents the famous “slipping and blisters” effect
- waterproof/breathable with CROSSTECH®



e

m

s

AIRPOWER “R1”™ BOOT

The Airpower R1 is the same boot as the Airpower X1, except that the Airpower R1 has the same heat rated sole as our other EMS boots, the Airpower R2 and Airpower R7.



s

AIRPOWER “R-2”™ BOOT

- Waterproof/breathable with CROSSTECH®, bloodborne pathogen resistance and chemical resistance
- HAIX® Lacing system for superior fit
- Protective toe cap
- Heat resistant sole
- Puncture protection sole
- Non marking, antistatic, extremely slip resistant rubber sole



t

a

t

AIRPOWER C6

Leather/textile combination, waterproof and breathable with GORE-TEX® superior fit with the HAIX® AS System.



i

o

n

AIRPOWER C7

All leather upper, waterproof and breathable with GORE-TEX® superior fit with the HAIX® AS System.





AIRPOWER P7 HIGH

- All leather, multi-purpose,
- Quick lacing tactical/patrol boot
- HAIX® Arch Support System
- 4-layer GORE-TEX®
- Waterproof and highly breathable
- Rubber/Polyurethane sole

AIRPOWER P6 HIGH

- Best boot for Police and Tactical Teams, NTOA Member Tested and Recommended.
- Modern look and extremely low weight
- HAIX® Arch Support System
- 3-layer GORE-TEX®
- Waterproof and highly breathable
- Rubber/Polyurethane sole

AIRPOWER P3

- NTOA Member Tested and Recommended
- Modern look and extremely light weight
- HAIX® Arch Support System
- 3-layer GORE-TEX® XCR
- Waterproof and highly breathable
- Rubber/Polyurethane sole

HAIX GSG9-S

- Closed two-zone lacing system
- Minimal seams for fast roping
- Flame retardant
- Crosstech® laminate
- Bloodborne pathogen & chemical resistant
- Waterproof and breathable
- Puncture resistant sole



NEBRASKA

- Improved damping
- Lightweight
- 4-layer GORE-TEX® laminate
- Waterproof and breathable
- Rubber/PU sole
- Superior footholds on uneven terrain
- Open hook quick lacing system permitting smooth movement

OREGON

- Haix Lacing system with clamp ring and self closing hooks
- Improved damping
- Lightweight
- Rubber/PU sole, non marking, antistatic
- Extremely soft leather lining

KENTUCKY

- Modern look and extremely light weight
- HAIX® Arch Support System
- 4-layer GORE-TEX®
- Waterproof and highly breathable
- Rubber/Polyurethane sole

AIRPOWER P91 DESERT

- NTOA Member Tested and Recommended
- Modern look and extremely low weight
- HAIX® Arch Support System
- 3-layer GORE-TEX® XCR
- Waterproof and highly breathable
- Rubber/Polyurethane sole
- Added leather reinforcement on inside leg



POLISH



BRUSHES



SOCKS



INSOLE REPLACEMENTS



ZIPPER REPLACEMENTS



BOOT JACK

t e c h n i c a l f e a t u r e s



SUN REFLECT



PROTECTIVE TOE CAP



PROTECTIVE SOLE



HAIX® DAMPING



NFPA CERTIFIED



CAN/CSA Z195 CERTIFIED



ZIP FASTENER WITH STOPPER



3 PHASE TPU SOLE



ARCH SUPPORT SYSTEM



COMFORT TONGUE SYSTEM



SOFTLY PADDED UPPER



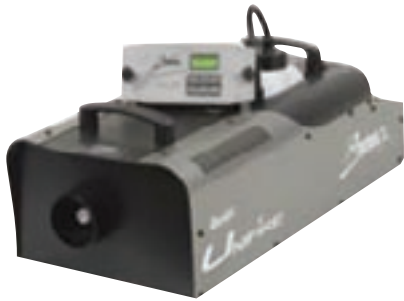
HAIX® CLIMATE SYSTEM



HAIX® LACING SYSTEM



HAIX® MSL SYSTEM



SMOKE MACHINES

Unifire smoke machines are built to meet the tough requirements found in the fire service and entertainment industries. These smoke generators produce more smoke and provide you with more control than any other smoke machine on the market. They feature variable output controls with 24-hour continuous run time, reliable high output and overheat thermal protection.



HD-PRO SMOKE FLUID

The best fog fluid available! 1 Gallon High Density Fog Fluid Smoke is thicker and lasts 3 times longer than ever before! For use in all water based smoke/fog machines.



DST-SERIES FANS

Unifire, DST-Series fans feature stainless-steel full-wrap frames, large wheels and tires that react to vibration like a pneumatic tire but are solid rubber. The fans are stand-alone operational, allowing one more rescue personnel to assist with the rescue needs than simply watching the fan. The open shroud allows the fan to be placed closer to the entrance, greatly diminishing the effects of crosswinds.



ELECTRIC SERIES PPV FANS

The electric series positive pressure ventilation (PPV) fans feature come standard in the DS series frame but are available in the DST series frame as well as the Du-All frame that allows the fan to be tilted in 180°.



VENTILATION/RESCUE CHAINSAW

Univent saws are built from the ground up to withstand the most extreme conditions. They feature an air injected engine, pure-foam air cleaner, high-performance carburetor, stainless-steel muffler-guard plate, solid bar with replaceable tip, and Carbide Chain of America chains. The chains and bar have been specially designed for a more secure connection to significantly diminish side-to-side chain motion and standard anti-kickback features.



SABRETOOTH CHAIN

The Sabretooth Carbide Tipped Chain is designed to cut through virtually any material fire fighters run into on scene, tin roofing, wood, nails, doors, etc.

COBRA CHAIN

The Cobra Carbide Tipped Chain is designed to cut through harder materials than the Sabretooth. With a tooth on each link, the chain cuts in a filing motion instead of a ripping and tearing motion.



CIRCULAR RESCUE SAW

The PRO-SAW/CUT-OFF Saw can cut virtually any material: brick, concrete, wood, steel, etc. The perfect fire service saw. Ergonomically designed to work in confined spaces. Light weight and powerful for safe and easy operation. Built tough to meet your extreme demands.



RESCUE CIRCULAR SAW BLADES

- USAR Concrete and Metal Cutting Diamond Blade
- Advanced Special Ops Diamond Blade
- Vacuum Bonded Diamond Blade
- Uni-Cut Carbide Circular Saw Blade
- Multi-Purpose Carbide Circular Saw Blade
- "The Rescue Blade" Carbide Circular Saw Blade



ATTACK-FORCE 1000 FIRE HOSE

ATTACK-FORCE 1000 has a superior “fit” between inner hose and outer jacket - eliminates bunching, wrinkling and snagging of outer jacket and tremendous improvement in abrasion and cut resistance compared to competition.



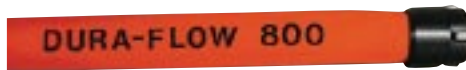
FIRE HYDRANT DROP-OFF PACK

The Hydrant Drop-Off Pack easily attaches to 2 ½”, 3”, 4” or 5” Hose. The pack can stay attached in its initial position while the hose is being charged.



HIGHRISE HOTEL APARTMENT PACK

The Highrise Hotel Apartment Pack is 36 inches long and holds hose bundles from 44 to 58 inches long. Please note that price is for pack only.



DURA-FLOW 800

DURA-FLOW 800 is a 100% synthetic, double jacket construction with a single-ply, extruded polyurethane liner. The outside jacket is thoroughly impregnated with our Ultra-Shield high-tech polymer that is abrasion and moisture resistant. Available in 50 Ft. or 100 Ft.



DURA-BUILT “Special”

100% synthetic (Cordura® Grade 6-6 polyamide warp) double jacket construction with a high grade, single-ply extruded synthetic rubber liner. The outside jacket is thoroughly impregnated with our Ultra-Shield™ high-tech polymer.



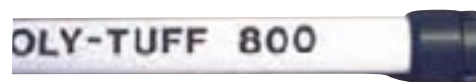
HI-TECH 600™

HI-TECH 600 has a 100% synthetic reinforcement construction which is totally encapsulated in a Nitrile Rubber compound utilizing a through-the-weave extrusion process. Available in 50 Ft. or 100 Ft. lengths.



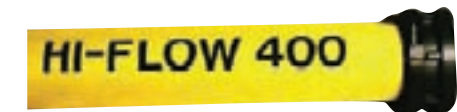
POLY-TUFF 800™ (coated)

100% polyester, double jacket construction with a high grade, rubber extruded liner, lightweight aluminum couplings. Ultra-Shield™ impregnation. Color: Yellow (other colors available).



POLY-TUFF 800™ (uncoated)

100% polyester, double jacket construction with a high grade, rubber extruded liner, lightweight aluminum couplings. Color: White “uncoated”.



HI-FLOW 400™

100% synthetic reinforcement which is totally encapsulated in a nitrile rubber compound, utilizing a through-the-weave (one-piece construction) process. The standard color is yellow. Available in 25 ft, 50 ft, or 100 ft. lengths. Meets ULC - S511.



c h e m g u a r d

CHEMGUARD'S CLASS A FOAM

Chemguard's Class A foam concentrate is a foaming agent with superior wetting capabilities. Comes in a square pail - fits compartments better.



CHEMGUARD'S 3%-6% AR-AFFF

Alcohol Resistant Aqueous Film Forming Foam (AR-AFFF)
- Specially formulated alcohol resistant aqueous film forming foam.



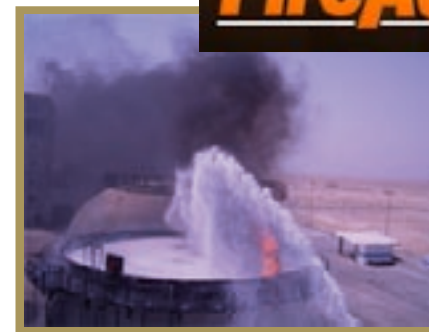
CHEMGUARD'S C135 FOAM

Formulated using a new and proprietary technology, ULTRAGUARD C135 can improve performance in all types of foam proportioning equipment, including in-line eductors, balanced-pressure systems, and built-in systems on Fire Apparatus.



SUPERTRAIN TRAINING FOAM

Specially formulated, biodegradable, synthetic foam concentrate, which has been specifically developed to simulate AFFF during live fire TRAINING sessions on low vapor pressure hydrocarbon fuels.



f i r e a d e

FIREADE 2000

FireAde 2000 is the World's most complete firefighting agent ever produced. It combines technologies that historically are not compatible in firefighting foam chemistry. It provides new technology that offers increased safety for firefighters. FireAde 2000 eliminates the complexity of choosing the right firefighting foam agent. FireAde 2000 has always been suitable for Class A and Class B firefighting. Now, FireAde 2000 has UL Listings that solidifies this designation. FireAde 2000 has successfully completed the Wetting Agent/NFPA 18-2006 testing.

FireAde 2000 is also UL Listed as a "Foam Liquid Concentrate" having complied with the UL 162 testing. This accomplishment with dual UL Listings confirms that FireAde 2000 is a "true" Class A and Class B product.

FireAde 2000 is the FIRST firefighting foam agent that is a "true" Class A, Class B, and Wetting Agent. It is also environmentally safe, non-corrosive, non-toxic, and bio-degradable. FireAde 2000 features provide the most cost effective way to extinguish fires.



1044 TRADITIONAL FIRE HELMET

Market-leading 5-year shell replacement warranty. Non-corroding, high-temperature-resistant faceshield/goggle hardware. Rugged, high-temperature edge will not melt or drip. Easy front headband adjustment for proper SCBA mask fit. Simple rear ratchet height adjustment to fit all head sizes. Headband size (6 3/8" to 8 3/8") fits a wide variety of head sizes. Durable helmet hanger fits on large hooks and resists bending.

CAIRNS INVADER 664® FIRE HELMET

Features a rugged, through-color DuraGlas® fiberglass composite shell and non-corroding, high-temperature-resistant faceshield/goggle hardware. Provides well balanced construction for all-day comfort and the tough thermoplastic shell offers everyday durability. An easy front headband (6 3/8" to 8 3/8" inches) adjusts for proper SCBA mask fit and, along with the rear ratchet height adjustment, fits a wide variety of head sizes.

360R RESCUE HELMET

The 360R Rescue Helmet offers the lowest profile of NFPA-approved helmets. Constructed of Ultem thermoplastic, this helmet features the same level of protection against impact and penetration hazards found in other Cairns helmets. This helmet is certified to both NFPA 1971-2007 for structural firefighting as well as NFPA 1951-2000 for urban search and rescue (USAR).



RMP BALACLAVAS

DESIGN – TWO PIECE with NOTCHED SHOULDER

HEAD DESIGN - LAYERS: 2 ply - SIZING: One size fits all

BIB DESIGN - LAYERS: 2 ply - LENGTH: 8 inches (front and back) - STRETCHED: 15 inches

CONSTRUCTION - SEAMS: All seams are merrow stitched then top and bottom covered with a 5-thread cover stitch for extended durability. All bottom edges are bound with binding.

CERTIFICATION - Meets or exceeds NFPA 1971-2007 Edition and is UL Certified. Meets or exceeds Cal/OSHA Standards.



EVOLUTION 5800 TIC

The newest addition to MSA's 5000 Series of Thermal Imaging Cameras, offers state-of-the-art imagery with a high-resolution-format, micro bolometer-based infrared sensor. Our new Image Detail Enhancement (IDE) software enhances the camera's imagery so that it matches the total dynamic range of the original image, and makes image detail visible to you, even in scenes with extreme-temperature dynamics.



EVOLUTION 5200HD2 TIC

The Evolution 5200HD2 TIC is a multipurpose firefighting tool, designed for search-and-rescue as well as structural firefighting. MSA's first high-resolution TIC provides superior images in Low and High Sense modes from the VOx micro bolometer that incorporates a 320 x 240 focal plane array sensor, generating over 76,000 pixels of image detail in both Low and High Sense modes.



EVOLUTION 5600 TIC

The Evolution 5600 TIC delivers reliable thermal imaging performance in a value-driven design for firefighters everywhere. This versatile TIC provides detailed images from the vanadium oxide micro bolometer sensor, and features a 120 x 120 focal plane array with over 15,000 pixels and a 45° field of view.



VIDEO CAPTURE SYSTEM FOR EVOLUTION® 5000-SERIES TICs

Small, easy-to-use, stand-alone video device records screen action of any Evolution 5000-Series TIC for up to 2 hours. Connects in seconds. Provides downloadable video clips of fireground for recordkeeping and training.



Evolution TIC - Fire Station Accessory Kit

Kit consists of two (2) rechargeable lithium-ion batteries, single-unit AC charger, retractable lanyard, carabiner, instruction CD, and hard plastic carrying case.



Evolution TIC - Fire Truck Accessory Kit

Kit consists of two (2) rechargeable lithium-ion batteries, Universal Truck Charger, retractable lanyard, carabiner, and instruction CD.



CLEARCOMMAND COMMUNICATIONS SYSTEM

MSA's ClearCommand Communications System is designed specifically to meet the modern communications needs of firefighters. Because it's available in two versions, amplifier and amplifier with radio interface, firefighting teams can be properly fitted for the job at hand.

QUICK-FILL SYSTEM

The patented Quick-Fill System lets MSA Air Mask users refill and transfill air cylinders while the SCBA is worn, without removing the air cylinder - even in IDLH atmospheres.

RESCUEAIRE II SYSTEM

The RescueAir II Portable Air Supply System is designed to meet the needs of Rapid Intervention Teams (RITs). The system consists of a lightweight Carbon-Wrapped cylinder, Quick-Fill emergency breathing system, ExtendAir™ emergency breathing system, and an MMR regulator, supported by a flame-and heat-resistant harness.

EXTENDAIRE SYSTEM

The ExtendAir System can be used as both an emergency breathing system and a dual-purpose device for MMR SCBA to allow firefighters to quickly and easily connect to an air-line.



ACCOUNTABILITY SYSTEM

Accountability is key to every firefighter's safety on a fire scene. MSA's new optional Accountability System revolutionizes fireground safety by combining the latest computer software with a high-performance radio module and the field-proven technology of MSA's ICM Tx Integrated PASS.

PREMAIRE CADET SUPPLIED AIR SYSTEM

Be prepared for emergency situations with MSA PremAire® Cadet. Make sure workers in dangerous environments have this respiratory protection. 5-minute escape cylinder provides the advantage you need in IDLH emergency situations, in a smaller unit.

RESPONDER CBRN PAPR

The MSA Responder® PAPR system is ideal for First Responder, Military and Special Operations personnel who need non-IDLH respiratory protection for an extended period of time. The MSA Responder® PAPR combines an industry leading motor-blower with a choice of two proven MSA gas mask CBRN facepieces and three proprietary cartridges designed for CBRN, particulate, and poisonous gases/vapors.

TECHNICAL RESCUE CART

The Technical Rescue Cart is a steel cart with a color-designed control panel to be used for primary respirator breathing air and one side for tool/secondary air requirements. Two 1 hour cylinders are used to provide air for respirators.

MSA FIREHAWK® M7 AIR MASK

MSA FIREHAWK M7 AIRMASK Features

1. TAKES THE HEAT
2. VIRTUALLY "BULLET-PROOF" ELECTRONICS
3. STRAIGHT-TALK COMMUNICATIONS
4. FIREGROUND MANAGEMENT
5. EXTENDED PROTECTION
6. LIGHTWEIGHT AND EASY TO USE
7. PLATFORM FOR THE Future

MSA
The Safety Company



ALTAIR® 4X

MSA
The Safety Company



IT'S WHAT'S INSIDE THAT COUNTS

OUR VISION OF SAFETY Workers who face potentially dangerous situations deserve the best protection available. At MSA, we work tirelessly to build smarter, better gas detection instruments that people across the world can rely on. To that end, we're proud to introduce the most advanced technology available in any portable gas detector on the market:

the ALTAIR 4X Multigas Detector with XCell Sensor Technology.

Built on Durability

The ALTAIR 4X Multigas Detector for LEL, CO, H₂S and O₂ is as tough and functional as it looks. A rugged housing provides unsurpassed durability, including the ability to survive a 20-foot drop. And with large, glove-friendly buttons and a high-contrast display, the ALTAIR 4X Multigas Detector is easy to operate in any work environment, even low-light conditions.

Powered by Performance

Toughness and durability aren't the whole story. The real strength of the ALTAIR 4X Multigas Detector comes from new sensor technology. MSA XCell Sensors have a typical life of more than four years, double the industry average, and are engineered using MSA's proprietary application-specific integrated circuit (ASIC) design. By miniaturizing the sensors' controlling electronics and placing them inside the sensor itself, MSA XCell Sensors offer superior stability, accuracy and repeatability.

MSA XCell Sensors are a breakthrough in chemical and mechanical sensor design, enabling faster response and span calibration times. With less time spent on calibration and bump tests, you save calibration gas, maintenance costs and, in turn, save money. But most importantly, in your industry, saving seconds on response time can also mean saving lives.

Count on the ALTAIR 4X Detector

Exclusive safety features like MotionAlert™ and InstantAlert™ make the ALTAIR 4X Multigas Detector ideal for applications like confined space entry. The MotionAlert sensor activates when a user becomes disabled and motionless, quickly alerting others to the disabled user's location. And with a simple push of a button, the InstantAlert feature enables users to manually alert others to potentially hazardous situations.

The ALTAIR 4X Multigas Detector outlasts the competition. To prove it, the instrument comes with a full three-year warranty, an entire year longer than the industry average, so you can depend on the ALTAIR 4X Multigas Detector to withstand the wear and tear that other portable gas detectors can't.



RH220C – SINGLE RADIO HARNESS

Universal single-radio harness fits all makes and models of radios. Ergonomic design combines a rounded shape with True North's proprietary internal suspension so the harness sits comfortably on your chest, without sagging or swinging.



RH200C DUAL RADIO HARNESS

Redesigned for greater comfort and function! Now featuring side-zip on internal pocket for faster access, and redesigned radio holders for ease of use. Our unique suspension system keeps radio harness comfortably on your chest, without sagging or swinging. Can also be mounted directly to your web gear shoulder harness with optional radio chest integration straps.



RBL20 RIT BAG

Made with our exclusive Iron-Cloth™ the RBL20 sets a new standard for rescue bags. The RBL20 is the same size, and has many of the same features as the L-1, but with one BIG difference – pull the side zipper and the bag expands to allow the addition of a rope bag (sold separately, rope bag can hold up to 200' of 9mm Kevlar line).



RBL21 ROPE BAG

Our newest search line bag is made of our new nylon 6,6 Iron-Cloth™ fabric for enhanced performance and durability. Designed to hold up to 200' of 9mm Kevlar line with rope ports at the top and bottom large enough for Chicago style knots and rings. Large Velcro opening allows rope to be easily re-stuffed at any time. Rope not included.



HS101 MAGNUM HOSE STRAP

One or two firefighters can carry the Magnum™ Hose Strap. The shoulder strap is long enough that a firefighter can carry the bundle across the body for better balance. This product incorporates many ideas given to us by our customers.



MB100R OVAL MASK BAG

Protect your S.C.B.A. mask with our fleece lined mask bag. Draw-string closure provides fast access. Slot pocket on back holds a hood. Fits all major makes and models.



MB400R RECTANGULAR MASK BAG

Protect your S.C.B.A. mask with our fleece lined mask bag. Velcro® closure provides fast access. Fits all major makes and models.



106 IRONS STRAP

The Irons Strap™ secures your halligan tool and force axe, while also providing a sheath to protect the axe blade and keep you and your equipment safe from harm. Now you can move and climb safely while the strap holds your tools perfectly balanced and readily accessible.

green technology for the fire service



Save hundreds of gallons in diesel fuel annually

- Diesel engines use a minimum of 1.25 gallons of fuel per hour while idling.
- GREEN Star™ only uses one quart, saving one gallon an hour.
- Nationally, 80% of response calls do not require the use of the fire pump.
- GREEN Star™ idle reduction technology mitigates the two leading causes of over consumption of fuel on non-pumping response calls. The results are considerable; departments have measurable savings within five years.*

**Results vary depending on call volume, time spent on-scene and fuel prices.*

Stay cool in the summer, hot in the winter

- GREEN Star™ supports auxiliary heating and/or air conditioners operating on the APU power. Even with the apparatus's main chassis engine turned off, crew members can rehab from harsh weather conditions.
- On-scene: GREEN Star™ operates off the auxiliary power mode for heating and/or cooling comfort.
- At the station: GREEN Star™ operates in the 120V mode while the apparatus is attached to a shoreline, keeping the cabin at a controlled temperature.
- Sacrifice nothing! Crew have all the power and features as they would if the main chassis engine was running. Only GREEN Star™ has the technology to make this possible.

“Hands-free” green mode activation

GREEN Star™ features fully-integrated automatic engine controls. Fire apparatus operators experience a “hands free” system activation. As the main chassis shuts down, the auxiliary power unit is remotely started. If needed, the controls will re-start the main chassis engine to prevent a low voltage situation.

Save thousands in DPF and service costs

- Diesel soot clogs the exhaust DPF due to frequent low engine temperature during idling. GREEN Star™ bypasses the DPF, thus reducing service and replacement costs of diesel particulate filters.
- Idling time on response calls traditionally ranges from 10-45 minutes.
- DPF cleaning: \$300 x 2 annually and/or DPF Replacements: \$5,000 (per lifetime)

Powerful auxiliary diesel gen-set

- GREEN Star™ is a clean diesel technology utilizing a diesel fired gen-set. The APU has similar physical dimensions and takes-up no additional space than a standard generator.
- The GREEN Star™ base configuration provides 8kW 120V/240V electrical power, thus eliminating the need for a second power source. All NFPA 1901 required electrical device such as warning lights, scene lighting and communications radios are supported.
- APUs are in use on many types of transportation including airliners, locomotives and long-haul trucks.

Green-up existing apparatus

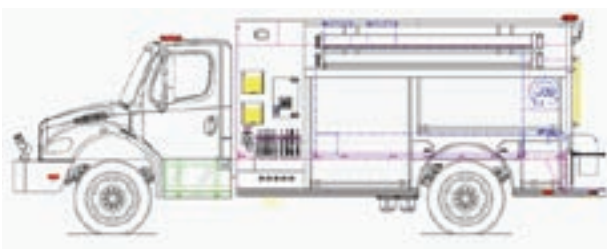
GREEN Star™ can be retrofitted onto most existing fire apparatus* to provide the outstanding fuel savings.

Retrofits are a great way to employ green technology to an aging fleet.

**Certain restrictions relating to space and chassis electrical may apply.*



RMP AVAILABLE DEMO UNITS • CALL US FOR MORE DETAILS AND AVAILABILITY!



ROSENBAUER MAVERICK PUMPER / TANKER #15261

- 2011 Freightliner M2-106 2 door chassis, 350HP Cummins engine
- Custom red and black paint scheme, painted roll up doors
- Rosenbauer NH40 4000LPM normal/high pressure pump
- Rosenbauer EZ Foam Class A foam system
- 1500 gallon poly water tank
- Rear dump chute with swivel dump
- Federal Signal LED lighting package
- Elkhart Sidewinder remote front bumper turret



ROSENBAUER ENCLOSED TOP MOUNT PUMPER #15263

- 2011 Freightliner M2-106 2 door chassis, 350HP Cummins engine
- Centurion fully modular aluminum body
- Fully enclosed top mount pump operator's panel
- Bostrom Secure-All SCBA seats
- Darley PSM 5000LPM midship pump
- FoamPro 2001 foam system with EZ fill
- 800 Imperial gallon poly water tank and Hydraulic over the top ladder rack
- Federal Signal LED lighting package with Q2B siren



ROSENBAUER TIMBERWOLF INTERFACE PUMPER #15262

- 2011 Freightliner M2-106 4 door AWD chassis, 350HP Cummins engine
- Extruded aluminum body construction
- Rosenbauer NH40 4000LPM normal/high pressure pump
- Rosenbauer Aquamatic foam system with tank refill and offboard foam drafting
- Crosslays in front bumper, remote control front bumper turret, booster reel
- 750 gallon poly water tank
- Firecom wireless headset communication
- Federal Signal LED lighting package



SEAT BELT CUTTER

The "V" Blade Safety Rescue Knife cuts through seat belts. Precision made of high strength aluminum alloy. Tip fitted with Dzus Key for opening aircraft panels. Will cut 10,000 lb. strength webbing with one stroke. Replacement blades available.


a

THE RMP "SET OF IRONS" TOOL

RMP Set of Irons consists of:

- 1 30 in. Standard Claw Hooligan Tool
- 2 Variable Straps & Shoulder Carrying Strap
- 1 GFE 6lb. Axe


n

PRY AXE W/STD CLAW

The Pry Axe is a lightweight, multi-purpose, slam and ram tool designed to pry, enlarge openings, cut sheet metal and twist off locks and latches.


d

HOOLIGAN TOOL 30"

Lightweight Hooligan Tool 30" (76 cm) 7 lbs (3 kg). Now available with a machined alloy shaft for lighter weight, these heavy-duty tools were designed to pry, pound, puncture, twist, and cut open or remove all types of barriers between emergency service personnel and saving a life.

CHANNEL LOCK


t

6-N-1 RESCUE TOOL

Hardened tool steel punch shatters safety glass. Aggressive cross-hatch teeth twist and pull anything that gets in your way. Laser Heat-treated cutting edges cut wires and cables easily. Pry-bar quickly pries open windows and doors. Slot for shutting off standard gas safety valves. Spanner Wrench tightens and loosens hose couplings.


o

RESCUE TOOL with CABLE CUTTER

Narrow jaw profile fits into tight spots. Hardened cutting edges shear through soft metal. Standard battery cables are no match for its cutting power. Spanner Wrench tightens and loosens up to 6" hose couplings. Shuts off gas safety valves. Pries windows and doors open. Tool steel punch shatters safety glass.


o

HOUDINI PRO™

The Houdini Pro emergency escape tool was engineered with superior performance in mind. The Houdini Pro is the preferred emergency rescue tool of many firefighters and police officers around the world.

Features: Window Breaker, Seatbelt Cutter, LED Flashlight


s

GERBER HINDERER RESCUE KNIFE

The Gerber Hinderer Rescue knife was made by a fireman with all the features you need: 440A Stainless, heavy duty blade, external blade release, oxygen tank wrench, safety hook cutter, pocket clip, window punch, lanyard hole and an over-sized thumbstud. You also get a 9 piece tool kit that is housed with the knife in a heavy duty Cordura sheath.



LITTLE ED™ 3610 RECOIL LED™

Outfitted with our Recoil LED module. The 3610 uses a 1 watt LED that's aimed backwards into the reflector. The body is made of tough ABS resin that's corrosion proof and resistant to extreme temperatures.



STEALTHLITE™ 2410 RECOIL™ LED

Same features as the StealthLite 2400 Flashlight but with the Recoil LED module that produces a true, bright collimated LED beam. The 2410 is corrosion proof, resistant to extreme temperatures, and submersible. It is powered by 4 AA alkaline cells (included). For hands-free operation, attach it to your hard hat with our optional helmet light holder.



9430 REMOTE AREA LIGHTING SYSTEM

The 9430 Remote Area Lighting System is the perfect unit for hard to reach places. At just 22 lbs. the 9430 is easily carried upstairs or up a ladder for those areas that are usually tough to light up. The extendable mast let's you have the light head up to 32" (82cm) above your work. The 12v rechargeable battery gives you high burn time of 8 hours with total burn time of up to 15 hours and recharges in 7 hours.



9410 LED LANTERN

BRIGHTEST & LIGHTEST IN ITS CLASS
At just 3 pounds and 710 lumens, the new 9410 LED Lantern packs the power without the weight. Four LEDs, powered by the latest generation NiMH batteries illuminate a distance of 450 yards (411.5 meters). 120° rotating head, Burn time: 4.75 hrs. (low)/1.75 hrs. (high), Battery status indicator and a 3 mode switch (High, Low, Flashing)



PELICAN 1550 CASE

Pelican 1550 Cases offer you the protection you need, backed by a name you can trust. When it comes to keeping your equipment protected you simply can't use an inferior product. You have to seek out a case that is made with strong, durable materials and that is made to the highest quality standards.



1510 Carry On Case

Watertight, crushproof and dustproof travelling case designed to protect your laptop, camera or other valuables. With its rolling wheels and retractable handle, this super tough case is perfect for wheeling onto planes, tossing into a canoe or whatever other vehicle you're rambling in. Rest easy that your valuables will stay dry and uncrushed.



REMOTE AREA LIGHTING SYSTEM RECOIL LED™

The most innovative RALS unit to date, the 9440 moves fast to light up ravines, confined spaces, riverbanks... anyplace generator lights can't go. Deployed, the mast extends 7 feet high, shining light over low obstructions encountered by traditional lantern style lights. With a 120 degree beam spread and up to 2400 lumens, the entire emergency area will have the light you need for a safe and swift operation.



RALS REMOTE AREA LIGHTING SYSTEM

Orange Pelican 9445 Remote Area Lighting System is a self-contained work light that features high intensity LED's that are controlled by a multi function switch with power indicator, a built-in tripod, and telescoping light head for versatility and performance on the go.



FOAM-FAST™ 3/4" FOAM APPLICATOR

The Scotty 4010-3 is the most simple and effective method of deploying a foam surfactant/wetting agent onto a fire scene from a 3/4" garden hose. Professional firefighters use foam surfactants in their water to lower the water's surface tension, allowing it to spread and penetrate much more easily.



FOAM-FAST™ 1 1/2" FOAM APPLICATOR

The Scotty 4010 Foam-Fast™ units are simple and effective tools for deploying a foam surfactant/wetting agent onto a fire scene with a 1-1/2" fire hose. When connected to a hose line, the 4010, available in 15, 30 or 50 gpm flow rates, works by diluting a solid foam cartridge into the water flow. The foam/water solution then passes through the patented Scotty Air-Aspirating Foam Nozzle producing low expansion foam.



FOAM WRENCH BRACKET

The Scotty 4580 Mounting Bracket enables a Scotty 4578 Drum & Pail wrench or a Scotty 4579 Super Spanner to be secured in place on a wall or in a cabinet, etc... The Bracket can be fastened vertically, horizontally or at virtually any angle. Once the Bracket is fastened in place, the Wrench can then be pulled out of and snapped back into the Bracket.



FOAM PAIL & DRUM WRENCH

The Scotty 4578 Pail & Drum Wrench is designed to loosen and tighten the caps found on standard 5 gallon foam pails and both the large and small bungs on 55 gallon drums. This wrench is made from incredibly tough, glassfilled nylon, comes in high visibility colors and is spark and corrosion proof.



SCOTTY SQUALL WALL™

The Scotty 4056 is an easy to use device that creates a wall of water to help cool and protect structures. When connected to a water supply hose the angled ramp within the unit directs the water flow up through the opening vent. Depending on flow and pressure, the Squall Wall can create a wall of water up to 40 feet wide and 20 feet high.



THROUGH-THE-PUMP FOAM EDUCTOR/MIXER

The 4071 Foam Eductor/Mixer is a very simple unit used to educt foam concentrate into hose lines. It is mounted between the discharge and suction side of a pump. For use on portable forestry pumps or fitted permanently to skid units, the 4071 is a simple and effective way for fire fighters to add a foam capability to their equipment.



SPANNER / GAS WRENCH

The Scotty 4577 Fire Coupler Spanner and Gas Wrench is a durable, lightweight wrench used to tighten and loosen 1" (25mm) to 3" (76mm) fire hose line couplers, swivel hose fittings and anvil lug couplers. The tool can also be used to open standard 70mm caps on 5 gallon foam concentrate containers.



REVOLVER MULTI-FLOW NOZZLE

The 4044 "Revolver" Nozzle is Scotty's unique answer for the need of a multi-perature field nozzle. The 4044 can be set on one of four different flow rates, three in a straight stream mode and one in a fan pattern. The pre-set flow rates are 3, 6, 10 and 12gpm. The flow rate is easily changed by rotating the outer barrel to the desired setting.



PRO-TECH 8 TITAN K

Titan K is today's gold standard for structural firefighting gloves! This new glove is the Kangaroo skin version of our Pro-Tech 8 Titan model. Kangaroo is considered the most rugged of all leathers ounce for ounce while maintaining incredible softness and pliability. The unique structure of kangaroo leather allows it to be cut down to a relatively very thin layer but still retain its strength.

PRO-TECH 8 TITAN

Pro-Tech 8 Titan use the highest quality components including DuPont Kevlar® and Nomex® and water repellent leather. The multi-layer design allows incredibly soft and comfortable break in with thermal protection that actually increases after washing, as proven during our lab certification testing; also while drying quickly and soft.

PRO-TECH 8 FUSION

Pro-Tech 8 FUSION again offers our ground breaking multi-layer construction in a new design which results in a stunningly light-weight, flexible and comfortable glove that goes well beyond all the protective and performance requirements of the NFPA 1971 Standard – 2007 Edition.

PRO-TECH 8X EXTRICATION GLOVES

The Pro-Tech 8-X design allows for more efficient performance compared to the traditional extrication glove designs that are in essence constantly replicated by many different manufacturers. During long extrication procedures the Pro-Tech 8-X construction maximizes flexibility and comfort which will limit hand fatigue which increase user safety and protection.



BDG EXTREME GLOVE

The next generation of professional work gloves that offer increased protection and greater flexibility, allowing you to work safer and faster. All styles are manufactured with the newest in materials and features that extend the functionality, dexterity and durability of a typical work glove.

PRO-TECH 8: B.O.S.S. TACTICAL

Lightweight, flexible, comfortable. Improves protection, reduces stress and fatigue. It uses a variety of silicone-coated Kevlar® fabrics and other functional synthetics, ergonomically placed to maximize protection and performance.

PRO-TECH 8: B.O.S.S. UTILITY

An extremely durable, versatile, hybrid extrication glove for the fire fighter who does more. Lightweight, flexible, comfortable. Improves protection, reduces stress and fatigue.

GLOVE STRAP

- Advanced multi thin-layered design provides repetitive thermal protection + cut/puncture resistance.
- Flexible 7 layer knuckle guard system protects your most vulnerable area to reduce and eliminate steam burns and cuts in the location that competitor gloves largely ignore.



ENHANCED UHPS SYSTEM

Base unit includes, forklift friendly skid tank, electric start pump, foam system, nozzle, 200ft hose, electric rewind reel, capture rollers, foam pail holder with hold down.

Includes:

- Rosenbauer UHPS pump, 10 gpm @ 1500psi
- Honda 18hp engine w/electric start
- Foam injection system with pickup tube
- 200' of high pressure hose on electric rewind reel
- High pressure fog/straight stream nozzle with foam tube
- Illuminated pump control panel with:
 - Start/run Control
 - Tank to pump valve



150 US Gallon Base Unit
200 US Gallon Base Unit
300 US Gallon Base Unit
Base unit less tank and skid



FIRETAK BACKPACK

The most advanced vinyl backpacks manufactured with design features not found on other models:

- collapsible
- light-weight yet durable
- all seams heat sealed
- 19 litre - 5 U.S. gallon capacity
- tough, polyester material with PVC coating
- 4" fill opening c/w screen, easy off cap & retainer
- adjustable carrying straps, similar to SCBA harness



LOW PROFILE "AIR COLLAR" STYLE TANK

The air collar is inflated within seconds using an S.C.B.A. cylinder.

- MA7700 -1700 Imp Gal (7700 Litres)
Approx weight 65 lbs Collapsed size 18" X 30"
#FTK-7700
- MA9500 -2100 Imp Gal (9500 Litres)
Approx weight 70 lbs. Collapsed size 20" X 28"
#FTK-9500



"FIRE BREAKER" PICK-UP TRUCK PACKAGE

Up to 20 minutes after a traffic accident, no deployed air bags can unexpectedly be inflated even with the battery disconnected. The HURST Air Bag Safe protects both rescuer and passenger from injury that might be caused by uncontrolled inflation of the air bag during rescue work.



FLOOD CONTROL DAMS

Firetak Flood Control Dams are ideal for water diversion and water containment. Fight water with water. No more messy sandbags!



TOTALLY ENCLOSED TANKS

Firetak developed this first of a kind, box style tank concept to replace bulky hard walled tanks. The applications are endless and with our wide variety of materials to choose from, we can offer storage for a great variety of chemicals. Our standard water storage units are constructed using a 28oz woven rip-stop material with a PVC coating. This provides superior durability and long service life. We use only heat sealed or bolt-in fittings and offer a choice of sizing for both. A special feature is a flotation collar around the fill opening which keeps the filler above the liquid level. These tanks can be transported by truck or trailer and when folded, a minimum of storage space is required.



Standard Features:

- Heat sealed 4" filler with cap
- 3" bolt-in outlet with plug
- Heat sealed straps for positioning
- Tie off straps for securing
- Lightweight and compact

Available Accessories:

- 2", 3" or 4" Bolt-in Outlet
- Ground Sheet
- Carrying Case
- Ball Valve/adapters

Randy 9000

A Brand New Manikin for Optimal Training Use.

The manikin is made from rugged polyethylene parts (PE; the same material out of which backboards are molded) that allow for the addition of varying amounts of weight to each of the pieces. You may add water, sand, or any other substance as long as you can empty the substance out of the parts. The empty manikin is easily moved and stored when training is completed. This custom-molded construction ensures constant size from one manikin to the next and allows the utilization of Randy 9000 in every environment imaginable. Each sealed piece is assembled with stainless steel hardware. The range of motion of the joints, including bending at the waist, mimics real life. Randy 9000 is perfect for RIT or Combat Challenge as well as ship-board, heavy-weight, horizontal rescues or lightweight packaging exercises like spinal immobilization.



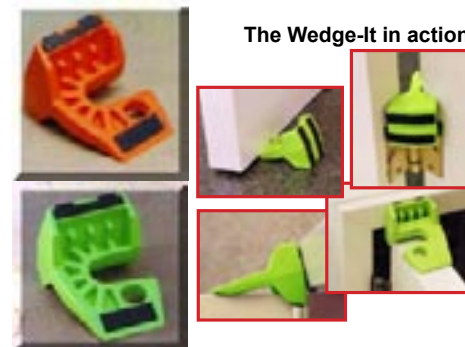
THE Bowring

Pound For Pound It Is The Most Versatile Personal Firefighter's Tool Ever!

This tool is proudly made in the U.S.A., designed by firefighters for firefighters. The Bowring is a compact, light weight, multi-purpose tool that will be used at some point on every fire alarm. It has so many uses that we have stopped counting, but here are just a few of them:

1. Hose advancement- fits six different size hoses
2. Emergency bailout descender-two different options
3. RIT Firefighter drag-hook and drag
4. The Ultimate High-rise tool-cheaterbar, stand pipe wheel, spanner wrench, hose advancement, emergency bailout descender
5. Gas shut off-two different options
6. Auto extrication-windshield removal, glass ripper
7. O2 wrench
8. Door wedge-just hang it on the hinge
9. Water shut off
10. Mattress hook-hook the wire frame and pull it out
11. Forcible entry tool
12. Spanner Wrench-fits pin lugs, rockerlugs, storz lugs
13. Sheet rock ripper-cleanly rips through while looking for hot spots
14. Nance drill-absolutely the fastest most efficient technique ever
15. Denver drill-great for that second story rescue





K-TOOL KIT

K-Tool Kit, Includes 6" Shove Knife
The complete K-Tool unit includes:

- K-Tool
- Set of Key Tools
- Leather Pouch
- Operation Manual
- Shove Knife

911 FIREFIGHTER GEAR BAG

Will hold Turnout Gear/Helmet/Gloves/Boots

- Large Bag—29" long X 16" wide X 15" high
- Made from heavy duty Nylon
- One main compartment
- Outside front pocket
- Two side pockets

RMP WEDGES

Small enough to fit in a pocket, strong enough to hold open the largest of doors and portable enough to hang on a uniform or trauma kit.

GLAS-MASTER

Glas-Master is a revolutionary new manually operated, self-supported (No Electricity or Hydraulics necessary) glass removal tool that gives rescuers extra time to save lives during the GOLDEN HOUR. 100% Technora® kernmantle construction provides longest exposure time to direct heat.



RUMBLER™ INTERSECTION CLEARING SYSTEM

The Federal Signal Rumbler™, intersection-clearing system, demonstrates the longstanding commitment to continue as the technological leader in warning sound, siren development, and operator safety.

VISI BEAM® SPOTLIGHT

For effective work area illumination, Federal Signal's VisiBeam® II high power spotlight features a handheld remote control head with pinpoint accuracy. The spotlight uses the combination of a highly polished parabolic reflector and halogen bulb to produce a clear, even lightbeam that exceeds both "spot" and "flood" sealed beams. Also available in 100 Watt version.

DRIFLEX™ COLD WATER RESCUE SUIT

The logical choice for Ice Rescue Professionals everywhere. We listened to the pros and developed features not found on any other suit. Our new Burp Grip™ handle makes it easier to release the air in the suit and the Invisalve™ allows for continuous purging of air ensuring that you get the maximum performance of the suit while being able to focus solely on the rescue.

THE SALUS RESCUE VEST

As a professional rescuer, you want nothing that will get in your way or let you down. Sometimes, having the right equipment will make the difference between a successful or failed rescue. With the careful placement of foam, we are able to achieve optimum flotation (22 lbs. of buoyancy to lift two people) while providing maximum flexibility and enhanced comfort.

STOCK GEAR PROGRAM



GEAR FOR ANY BUDGET

AVAILABLE STOCK GEAR SIZE FOR QUICK DELIVERY

CHEST	SIZE	INNOTEX SLEEVE	WAIST	INSEAM
34-36	S	33	28-30	28, 30 & 32
38-40	M	34	32-34	28, 30 & 32
42-44	L	35	36-38	28, 30 & 32
46-48	XL	36	40-42	28, 30 & 32
50-52	2XL	37	44-46	28, 30 & 32
54-56	3XL	38	48-50	28, 30 & 32

SHIPPED BETWEEN 1 TO 10 WORKING DAYS (USA & CANADA)

INNO5172

Outer shell: NOMEX® IIIA (Yellow) **Moisture barrier:** RT7100™ (Type 3D) from W.L. Gore **Thermal liner:** XLT-Lite™ Chambray 7.8 osy

COAT

- Unique PATENTED BR-1™ six-layer Collar (3")
- 32" style coat • hook & loop 2" x 2" throat flap
- Zip and hook and loop attachment
- Radio pocket 8" x 4" x 2" with mic loop (left chest)
- Two (2) semi bellow 8" x 10" pockets
- Inside left pocket with hook and loop attachment
- NFPA style 3" triple trim (lime/yellow with silver center)
- Nomex® wristlets with thumb hole
- Ara-Shield® reinforcement on sleeve cuffs

PANT

- Regular waist
- Hook and D-ring + hook and loops fastener closure
- Two (2) semi bellow 10" x 10" pockets
- Ara-Shield® reinforcement on cuffs and knees (gray)
- Waist adjustment straps in black webbing
- Deluxe heavy duty removable cotton "H" style suspenders

INNO5222

Outer shell: KEVLAR®/NOMEX® IIIA (Tan) **Moisture barrier:** RT7100™ (Type 3D) from W.L. Gore **Thermal liner:** XTRA-Lite™ Chambray 7.3 osy

COAT

- Unique PATENTED BR-1™ six-layer collar (3")
- 32" style coat • hook & loop 2" x 2" throat flap
- Zip and hook and loop attachment
- Radio pocket 8" x 4" x 2" with mic loop (left chest)
- Flash light holder (clip with adjustable hook & loop fastener)
- Two (2) semi bellow 8" x 10" pockets
- Inside left pocket with hook and loop attachment
- NFPA style 3" triple trim (lime/yellow with silver center)
- Nomex® wristlets with thumb hole
- Ara-Shield® reinforcement on sleeve cuffs (gray)

PANT

- Regular waist
- Hook and D-ring + hook and loops fastener closure
- Two (2) semi bellow 10" x 10" pockets
- Ara-Shield® reinforcement on cuffs and knees (gray)
- Waist adjustment straps in black webbing
- Deluxe heavy duty removable cotton "H" style suspenders

INNO55Q3

Outer shell: PBI®/Kevlar® with Matrix™ Tech (Gold) **Moisture barrier:** CROSSTECH® (Type 2C) from W.L. Gore **Thermal liner:** Quantum 3D™ 7.7 osy

COAT

- Unique PATENTED BR-1™ six-layer collar (3")
- 32" style coat with Retractable Action Back
- Hook & loop 2" x 2" throat flap
- Zip and hook and loop fastener
- Radio pocket 8" x 4" x 2" with mic loop (left chest)
- Flashlight holder (clip with adjustable hook & loop fastener (right chest)
- Two (2) semi bellow 8" x 10" pockets
- Inside left pocket with hoop and loop attachment
- NYC style 3" triple trim (lime/yellow with silver center)
- Nomex® wristlets with thumb hole

PANT

- Regular waist with high back
- Hook and D-ring + hook and loops fastener closure
- Two (2) full bellow 10" x 10" x 2" pockets
- EMK™ Enhanced Mobility Knees in Ara-Shield® (gold)
- Ara-Shield® reinforcement on cuffs (gold)
- Waist adjustment with two "Alligator" clips
- Deluxe heavy duty removable cotton "H" style suspenders

INNO6222X

Outer shell: KEVLAR®/NOMEX® IIIA (Gold) **Moisture barrier:** RT7100™ (Type 3D) from W.L. Gore **Thermal liner:** Xtra-Lite™ Chambray 7.3 osy

COAT

- Conventional 4-layer collar (4")
- Zip in liner attachment
- 32" style coat with special tail design and Retractable Action Back
- Hook & loop 2" x 2" throat tab
- RHL™ rounded hook & loop (patent and design pending)
- Radio pocket 8" x 4" x 2" with mic loop (left chest)
- Two (2) semi bellow 8" x 10" pockets
- Flashlight holder (clip with adjustable hook & loop fastener (right chest)
- Inside left pocket with hook & loop attachment
- NFPA style 3" triple trim (lime/yellow with silver center)

PANT

- Regular waist
- Hook and D-ring + hook and loops fastener closure
- Two (2) semi bellow 10" x 10" pockets
- EMK™ Enhanced Mobility knee in Ara-Shield® (gold)
- Ara-Shield® reinforcement on cuffs (gold)
- Waist adjustment straps in black webbing
- Deluxe heavy duty removable cotton "H" style suspenders



CLASSIC DESIGN

SPECIAL FEATURES

FULL CUSTOM GEAR



Reach-Flex™ on Sleeve Gussets
Large underarm gusset on sleeves. Added piece (on all three layers) of fabric in the underarm portion; facilitates upper arm movement and minimizes rise both in sleeve and coat when arm is in an upward position.

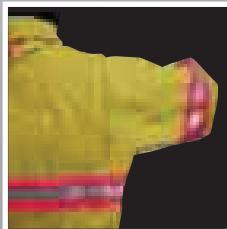
- Classic Design™ fits all body types
- Proven and tested design



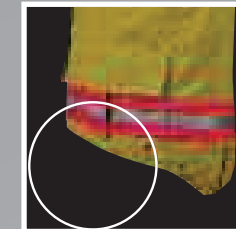
Pre-Formed arm shape
Pre-formed sleeves, contoured arm cut for ease of movement and comfort. Articulated elbows.

X DESIGN

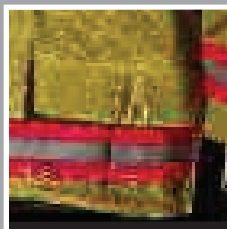
SPECIAL FEATURES



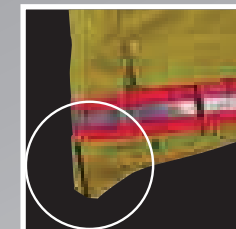
FMA™: Forward Motion Arm system (minimizes restrictions of arm movements and coat rise). Semi set-in sleeve.



Coat shorter in the front reducing bulk and increasing ease of forward bending movement.



Angled semi bellow pocket with center pleat (6.5"x10"). Back of pocket deeper than the front as bottom of pocket follows cut of coat hem.



Coat longer in the back for added coverage when bending forward.

COAT STANDARD FEATURES



X-STITCHING



YOC STRAP®



"L" SHAPE CONSTRUCTION



EYELETS



ACTION BACK



GLOVE STRAP



SHOULDER REINFORCE



FLASHLIGHT HOLDER

PANT STANDARD FEATURES



PRE-FORMED LEGS



DOUBLE FLY PROTECTION

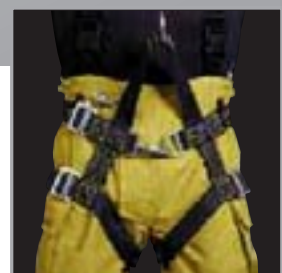


BOOT CUT DESIGN



LESS WEAR & TEAR

PANT OPTIONS



**ATTACHMENT SYSTEMS FOR
EXTERNAL HARNESS**



**TUNNEL AND BELT LOOPS
COMBO SYSTEM**



GAITERS



ENHANCED MOBILITY KNEE

Ready-Heat 6-Panel Blanket

Our Ready-Heat Disposable Medical/Emergency Heated Blanket is produced in a variety of sizes that are being manufactured using synthetic non-woven fibers. These potentially life saving blankets come individually sealed in an oxygen free protective poly-bag. When the poly-bag is opened, the blanket's heating elements react with the oxygen in the atmosphere and generate heat. The heat that will be generated will provide sufficient warmth and comfort to the user for several hours.



Ready-Heat II 12-panel Blanket

Ready-Heat II is designed more specifically as a first responder blanket to treat shock and hypothermia. It warms to a minimum 100°F/37.8°C in 10 minutes and will maintain that minimum heat for 6 hours. The blanket has a foam core and is lightweight and comfortable. This comfortable warming blanket is also finding many other medical, EMS and other applications where warmth is required.

Ready Heat Infant Warming Cocoon

Our Ready-Heat Infant warming Cocoon is designed for hypothermia prevention and temperature management for the most precious cargo. The cocoon has six warming panels to cover the vital organs and has two adjustable hook and loop fasteners for size adjustment. The cocoon has an attached hood for extra comfort and protection. The cocoon warms to 100°F/37.7°C in 15 minutes, lasts for 8 hours, is disposable and has a 5 year shelf life.





**ROCKY
MOUNTAIN
PHOENIX**

ABBOTSFORD, BC
#103 - 2285 Queen Street
Abbotsford, BC
V2T 6J3
Toll Free: 1-888-815-0500
Fax: 604-864-4938

RED DEER, ALBERTA
6415 Golden West Ave
Red Deer, Alberta
T4P 3X2
Toll Free: 1-800-494-4210
Fax: 403-347-7049

BRIDGEWATER, NS
320 Logan Road
Bridgewater, NS
B4V 3J8
Phone: (902) 298-0415
Fax: 1-866-866-8740

EMERGENCY SERVICE - 24 / 7 / 365

NEW APPARATUS

Harvey Dussault	General Manager - New Apparatus / Operations	(403) 314-6830
Howard Bradley	General Manager - Used Apparatus / Equipment	(403) 314-6840
Carey Feduniw	Sales Manager - New Apparatus	(403) 314-6842
Darren Daviduck	BC / YK New Apparatus Sales	(250) 870-0678
Paul Prevost	New Apparatus Sales	(403) 302-8499
Jay Elliott	New Apparatus Sales	(403) 506-6982
David Spencer	New Apparatus Sales Support	(403) 314-6837
Mark Low	New Apparatus Sales Support	(403) 314-6841
Mike Feduniw	New Apparatus Contract Admin	(403) 314-6843
Ray Bonin	Apparatus Parts Support	(403) 314-6838
Chris Swain	Atlantic Sales Manager	(902) 298-0415

EQUIPMENT

Gary Shaddock	Sales Manager - Equipment / Marketing	(403) 589-0866
Brian Hoeght	BC Lower Mainland / Fraser Canyon Sale	(778) 908-2330
Shawn Dick	BC Northern Sales / YK	(250) 613-3194
Robert Bouffard	AB Northern Sales	(780) 995-1780
Andy Holzli	AB Central Sales	(403) 598-4314
Jon Penner	AB Southern / BC East Kootenays Sales	(403) 598-4733
Jim Norbury	SK Saskatchewan Sales	(306) 530-3649
Chuck Termeer	MB Manitoba Sales	(204) 871-6606
Mike Tisdelle	Vancouver Island Sales	(250) 866-6491
Tara Panrucker	Okanagan Sales	(250) 859-1091

SERVICE

Brant Strum	Service Manager EVT	(403) 314-6834
Fred Langenberger	Shop Foreman - EVT	(403) 347-7045
Rod Bryant	Customer Support Manager	(403) 314-6848
Barb Wilson	Service Admin Support	(403) 347-7045
Curtis Bechtold	EVT	(403) 347-7045
Chris Ewen	EVT	(403) 347-7045
Don Bugbee	EVT & Ambulance Specialist	(403) 347-7045
Ben Bonk	SCBA Technician	(250) 613-3651
Gale Myers	Master EVT	(403) 302-8329
Ray & Terry Hasnip	AB / YK / NWT Mobile Apparatus Service EVT	(403) 302-8162
Kirk Roddie	SCBA Tech / Ground Ladder Testing / HURST Service	(403) 347-7045
Shawn Lyle	EVT	(403) 352-4214
Yvon Lehoux	Lower Mainland Service Technician	(604) 557-3605

OPERATIONS

Brent Pedersen	Operations Manager	(604) 557-2890
Kathy Perizzolo	Operations Specialist	(604) 557-2898
Darwin Draper	Operations Team Lead	(403) 347-6852
Bob Stefaniszyn	Customer Service Agent	(403) 314-6846
Michael Paine	Shipping/Receiving	(604) 557-2894
Jamey Pelletier	Customer Service Agent	(604) 557-2891
Katrina Davison	Customer Service Agent	(604) 557-2899
Andrew Smalbrugge	Customer Service Agent	(604) 557-2892
Max Gallant	Customer Service Agent	(604) 557-2893

ADMINISTRATION

Cindy Braun	Controller	(403) 314-6845
Jodie Derman	Accounts Payable	(403) 314-6835
Cathy Eagles	Accounts Receivable	(403) 347-7045
Donna Rud	Red Deer Receptionist	(403) 347-7045